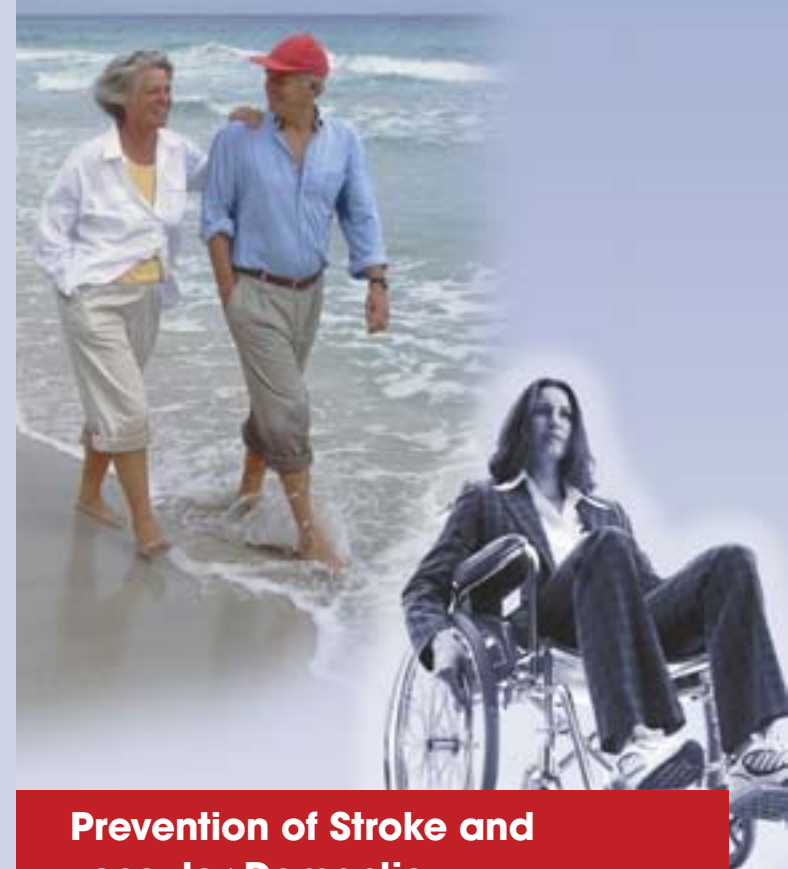


# Enjoy your Life,



**Prevention of Stroke and vascular Dementia**

caused by cardiac arrhythmias

**Take precaution now  
 Do the SRA-Check-Up!**

**Ask your doctor**

**To prevent strokes and vascular dementia caused by atrial fibrillation, it is essential to diagnosed it in time**

**Detection of atrial fibrillation with a high probability**

With the revolutionary Stroke Risk Analysis (SRA), apoplex medical technologies has set a milestone in the detection of atrial fibrillation.

Clinical trials have demonstrated the superiority of the SRA in the identification of patients with intermittent atrial fibrillation

**Risk factors for atrial fibrillation**

Independent from age the following factors increase the risk for atrial fibrillation:

- **High blood pressure**
- **Diabetes Mellitus**
- **Obesity**
- **Hyperthyroidism**
- **Endurance sports**
- **Heart Failure**
- **Smoking**
- **Alcohol abuse**

If you have acquired one of those risk factors you should consider having a SRA-Check-Up.

**Are you a patient at risk?**

- Do you possibly suffer from unrecognised atrial fibrillation?
- Little symptoms like dizziness, weakness, lack of energy or shortness of breath with effort could be first hints for atrial fibrillation
- Do you sense a rapid or irregular heart beat from time to time?

**What can you do?**

- Reduce your risk for stroke and/or vascular dementia. Be aware of your cardiac arrhythmia.
- The revolutionary SRA can help you
- Take one hour and you feel more secure
- Ask your doctor about this new scientifically verified check up.

**The SRA-Check-Up – a milestone in the detection of intermittent atrial fibrillation!**

Stamp

## Atrial fibrillation

### The most common cardiac arrhythmia

### The most dangerous single risk factor for stroke and vascular dementia

#### Did you know, that

- Up to 30% of all strokes are related to atrial fibrillation
- Several ten thousand strokes in Germany alone could have been prevented if atrial fibrillation was detected in time
- Even short fibrillation episodes can cause the forming of blood clots
- Other cardiac arrhythmias than atrial fibrillation can be hints for cardiac diseases

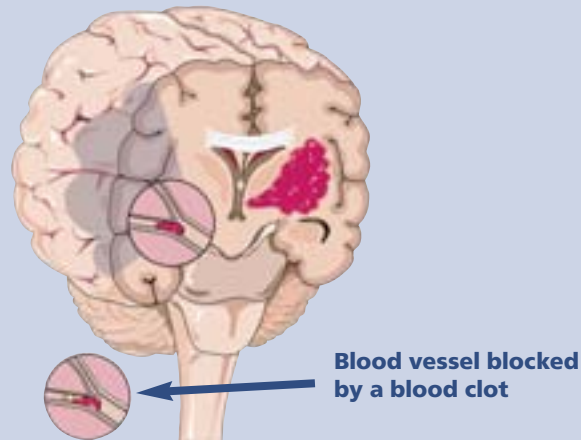
#### Consult your doctor today, because...

...there is an easy way to find out your risk for stroke and cardiac diseases caused by cardiac arrhythmias just within one hour.

## What are cardiac arrhythmias and how can they cause strokes and vascular dementia?

The origin of cardiac arrhythmias is manifold. Usually they are caused by structural changes in the heart itself, but they can also be triggered by psychic stress, depression, endurance sports or medications.

Often they are completely harmless, but medical assessment is recommended.



## What is atrial fibrillation?

Atrial fibrillation is the most common and one of the most dangerous cardiac arrhythmias. The muscle cells in the atrium do not completely contract which causes an irregular heart beat.

The blood flow is impaired by this irregular heart beat and the probability of blood clot formation is increased. These blood clots are transported into the cerebrovascular system with a high probability and cause strokes and vascular dementia.

## What is a stroke

A stroke is a sudden loss of brain function, caused by a loss of oxygen supply through the blood.

Stroke can be caused either by a clot obstructing the flow of blood to the brain or by a blood vessel rupturing and preventing blood flow to the brain.

## What is vascular dementia

Vascular dementia is a degenerative cerebrovascular disease that leads to a progressive decline in memory and cognitive functioning. It occurs when the blood supply carrying oxygen and nutrients to the brain is interrupted by a blocked or diseased vascular system.

Sometimes, the general term vascular dementia is not used and a more specific name is given to describe the type of damage in the brain – for example, multi-infarct dementia.

The multi-infarct dementia is often caused by cardiac diseases, especially atrial fibrillation.

Multi-infarct dementia causes loss of functioning to specific areas of the brain, impairing some neurological and mental functions and not others.

## Diagnostic of atrial fibrillation

In the beginning, atrial fibrillation occurs from time to time only (intermittent). That makes it difficult to find.

In addition, fibrillation episodes are in many cases not accompanied with symptoms. Therefore finding atrial fibrillation is often accidental.